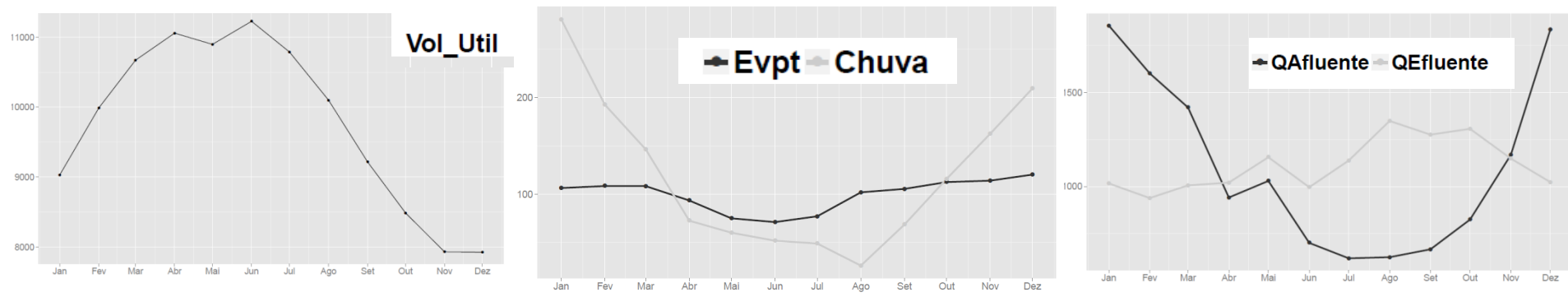


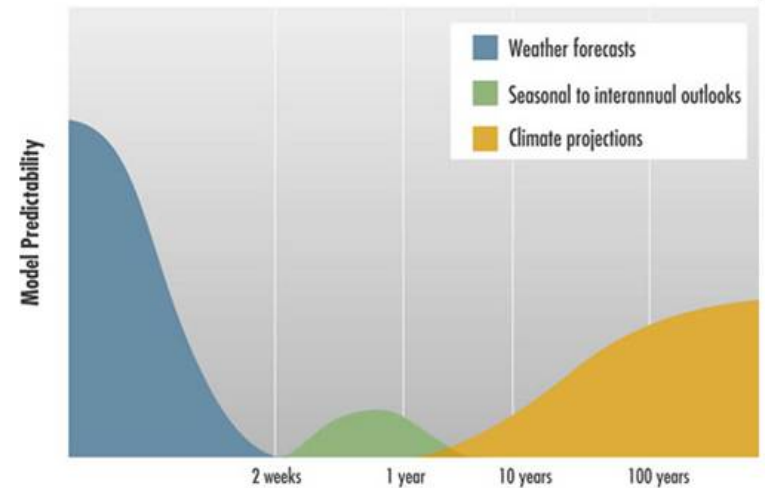
Padrões hidrometeorológicos no Sistema Cantareira

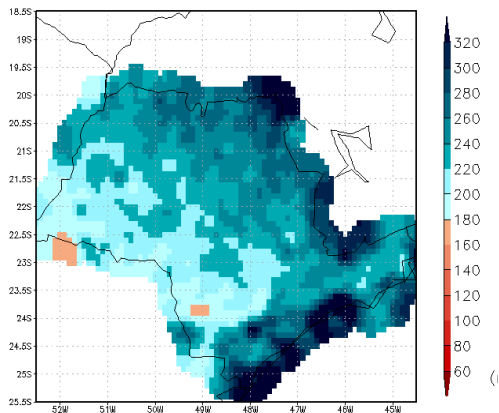
Humberto Ribeiro da Rocha

Balanço de água médio mensal (mm mês⁻¹) reservatório Jaguari-Jacareí, 1997 a 2012 (fonte: Rocha et al 2015, in prep)



Previsibilidade atmosférica

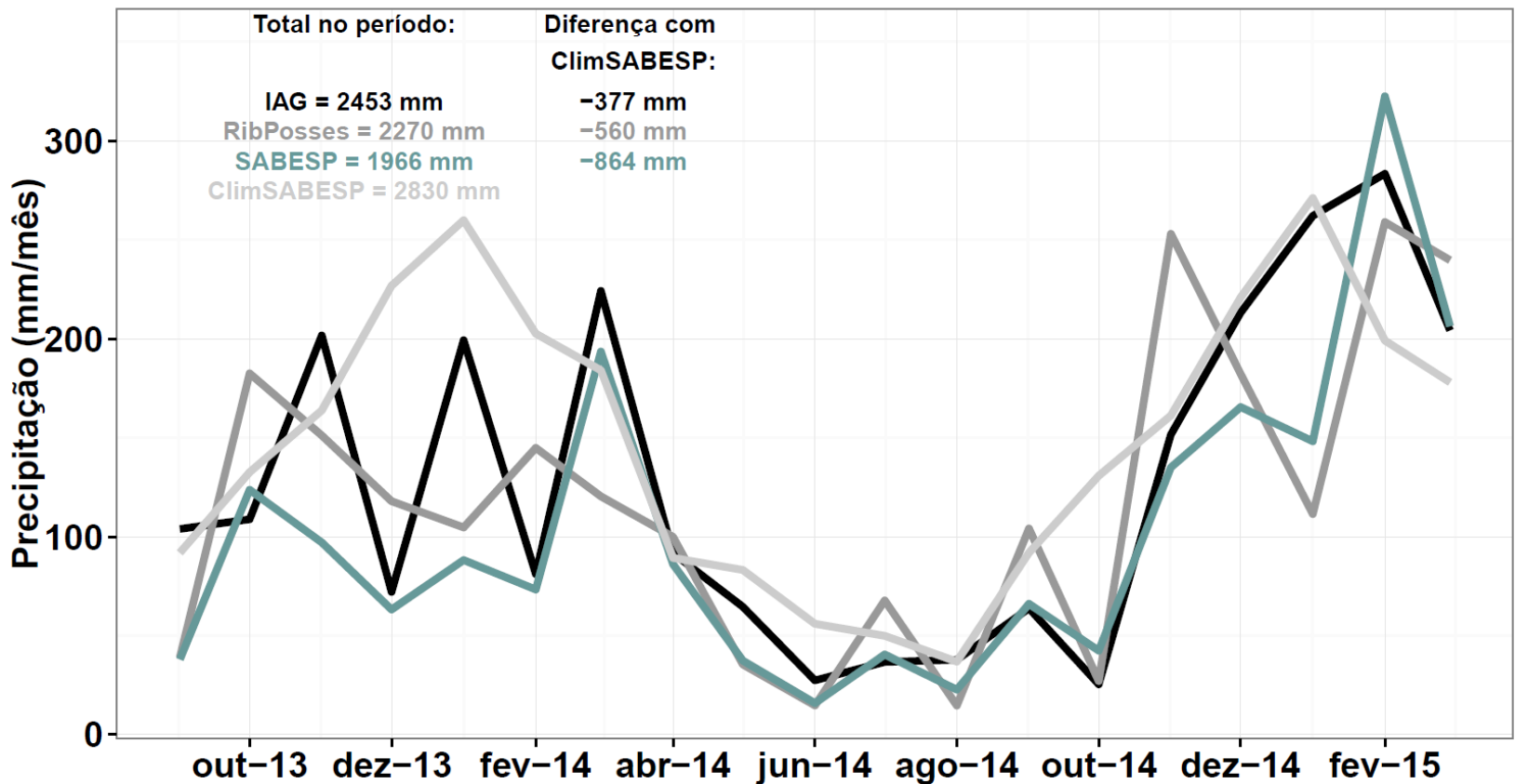




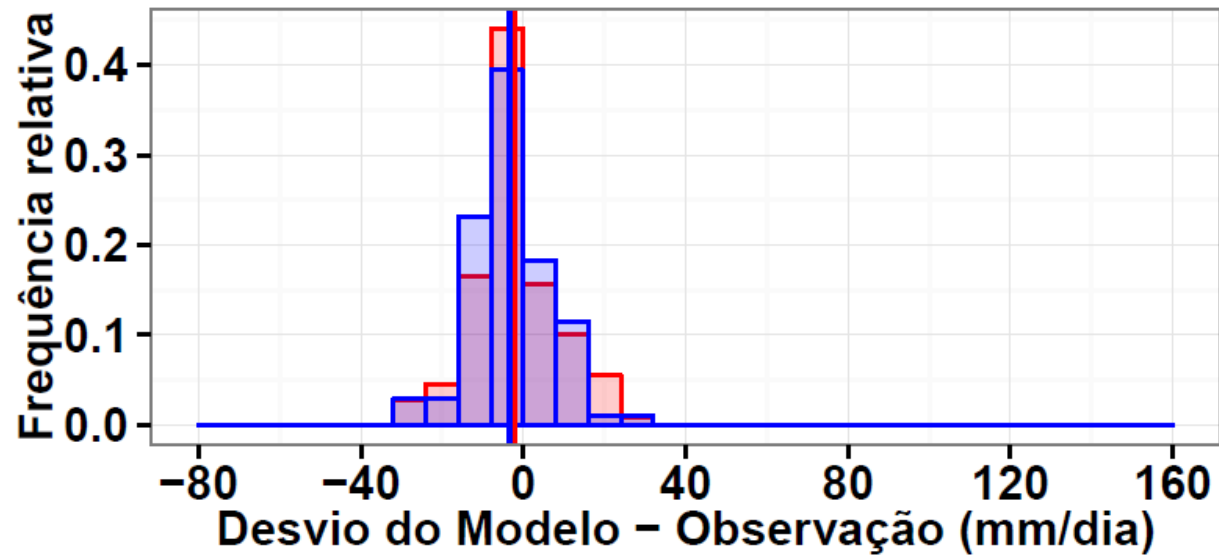
Precipitação média mensal (Jan). Fonte: dados DAEE

Precipitação mensal entre Out 2013 a Mar 2015

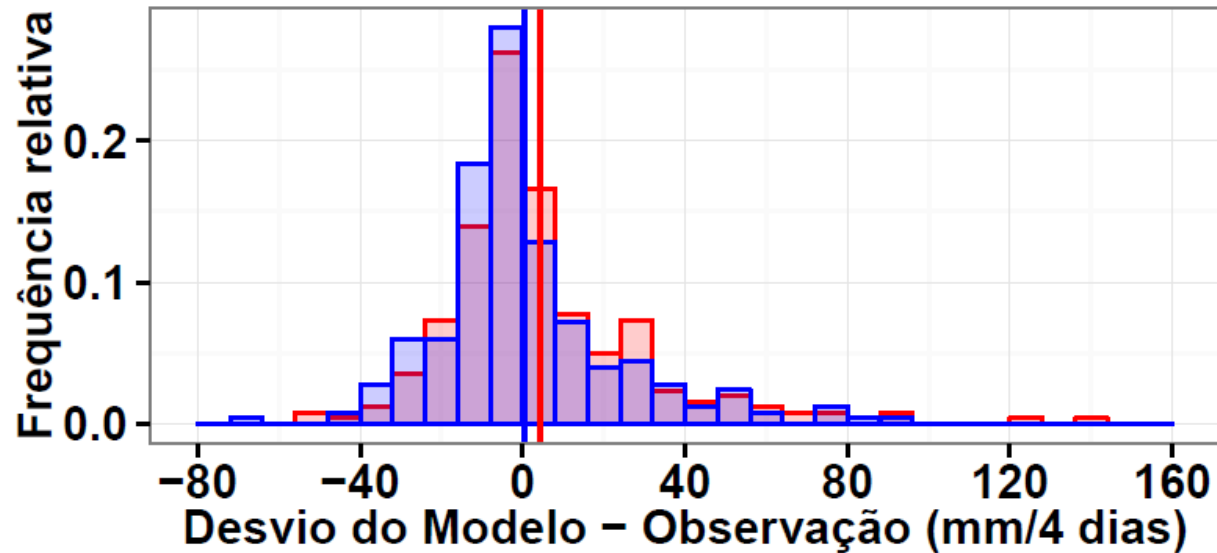
Fontes: IAG Ribeirão das Posses SABESP Climatologia SABESP



Previsão de chuva no Sistema Cantareira entre Out 2013 a Mar 2015



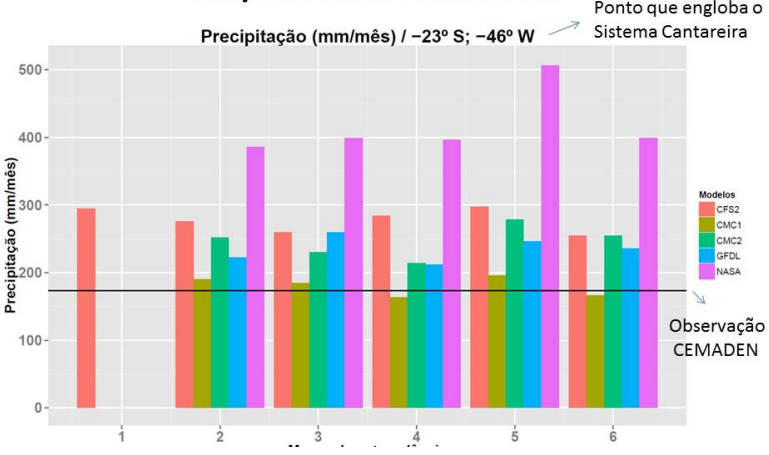
WRF MM5



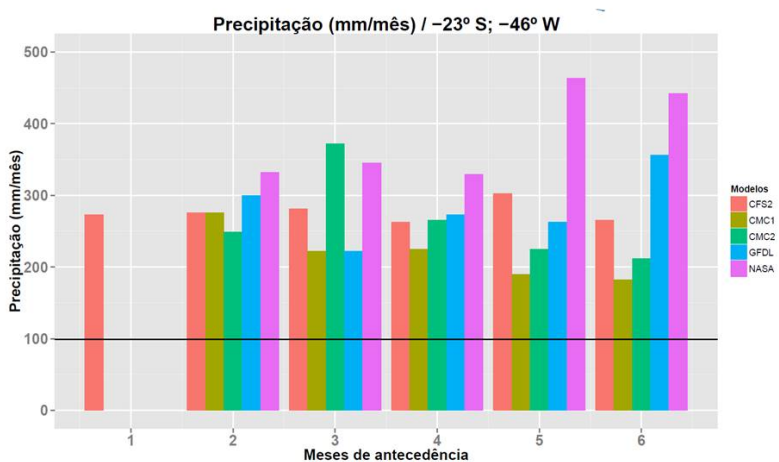
Avaliação dos modelos de previsão sazonal

- Variável: precipitação mensal;
- Modelos: CFSv2, CMC1, CMC2, NASA e GFDL do North American Multi-Model Ensemble/National Weather Service/Climate Prediction Centre/NOAA/USA
- Intervalo : dois meses mais secos (Dez/14 e Jan/15) e dois meses mais chuvosos (Fev/15 e Mar/15).
- Avaliação por meses de antecedência, de 6 a 2.

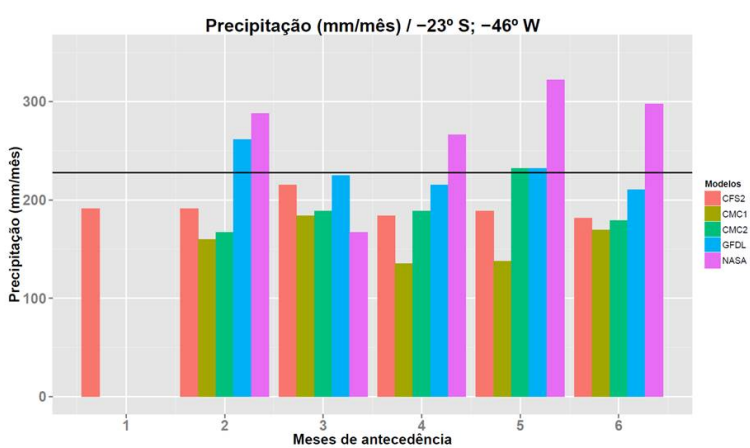
Dez/2014: mês mais seco



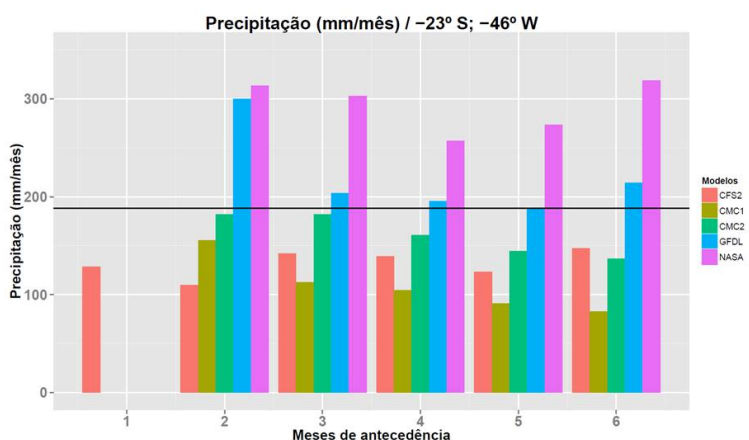
Jan/2015: mês mais seco



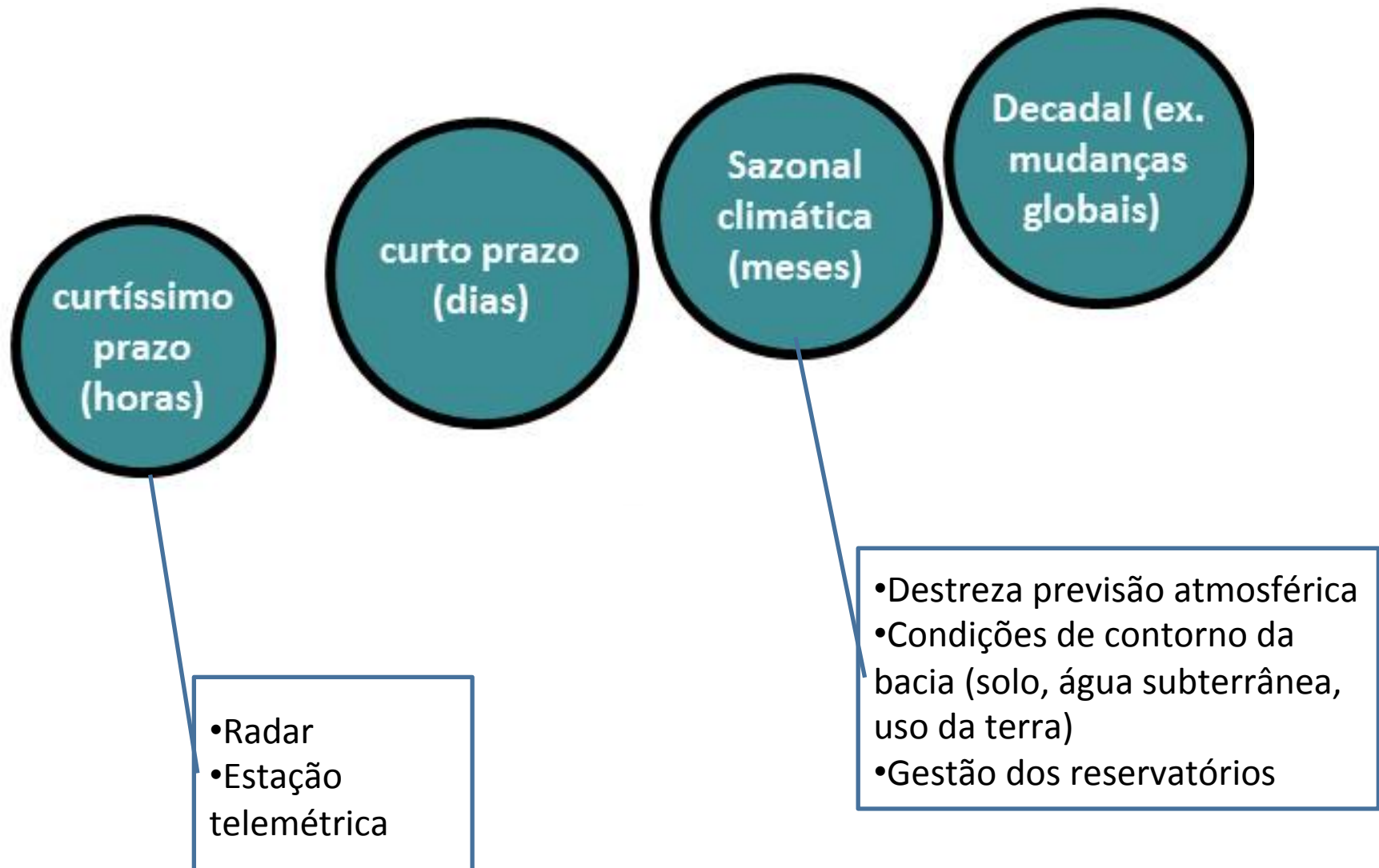
Fev/2015: mês mais úmido



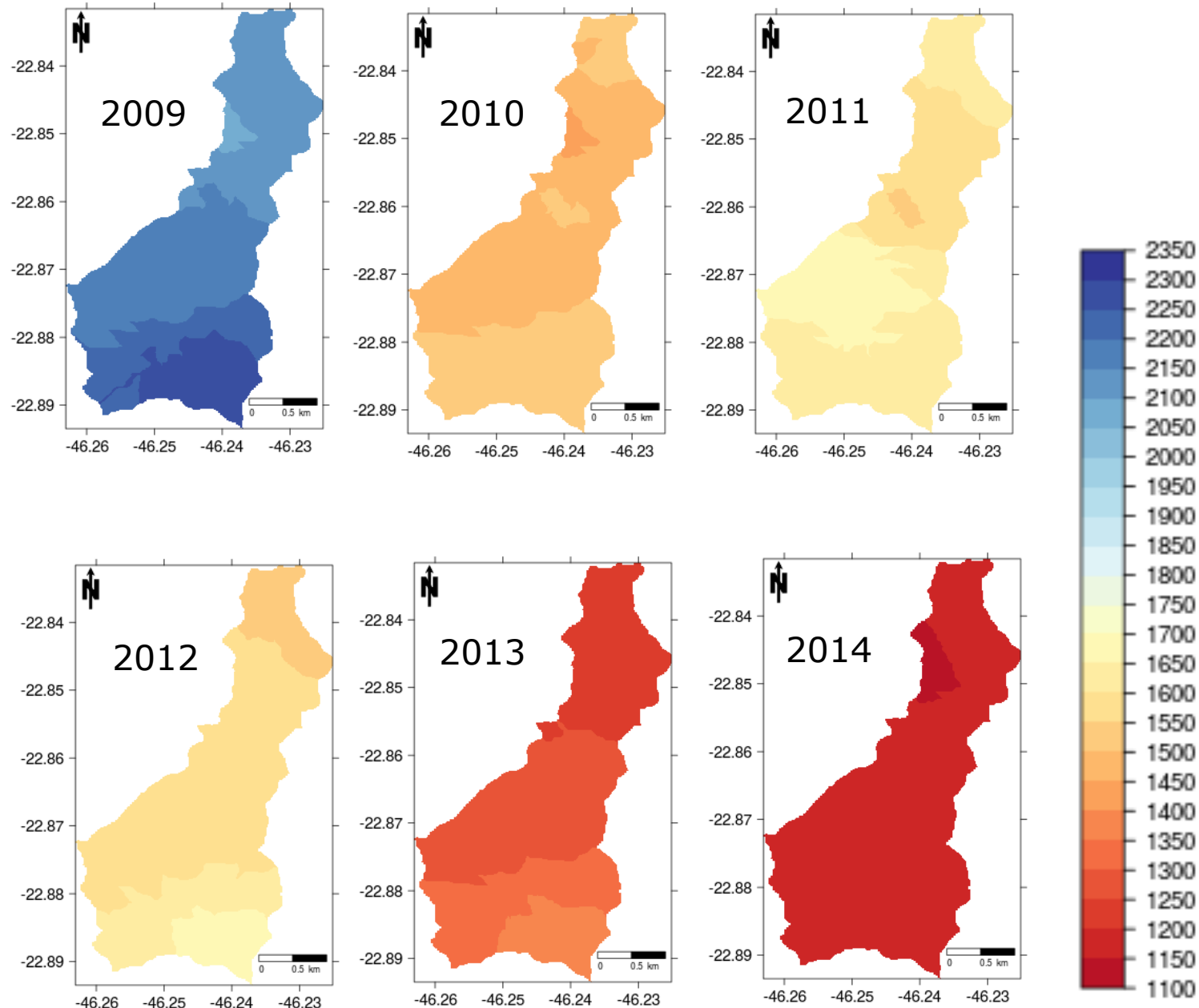
Mar/2015: mês mais úmido



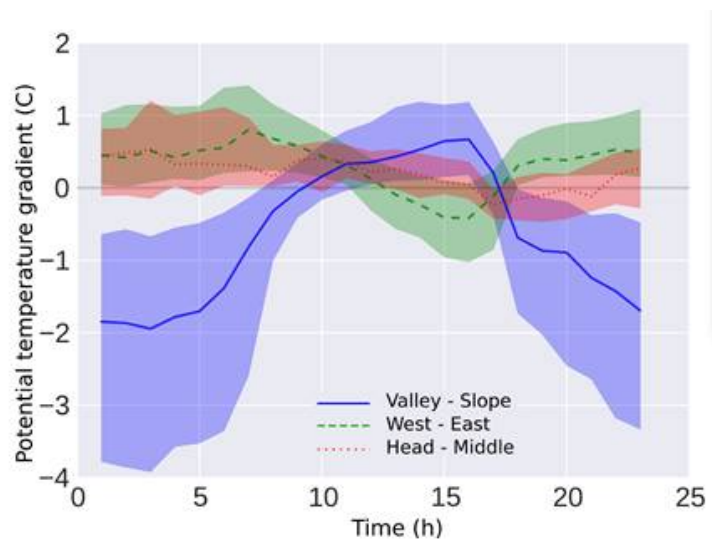
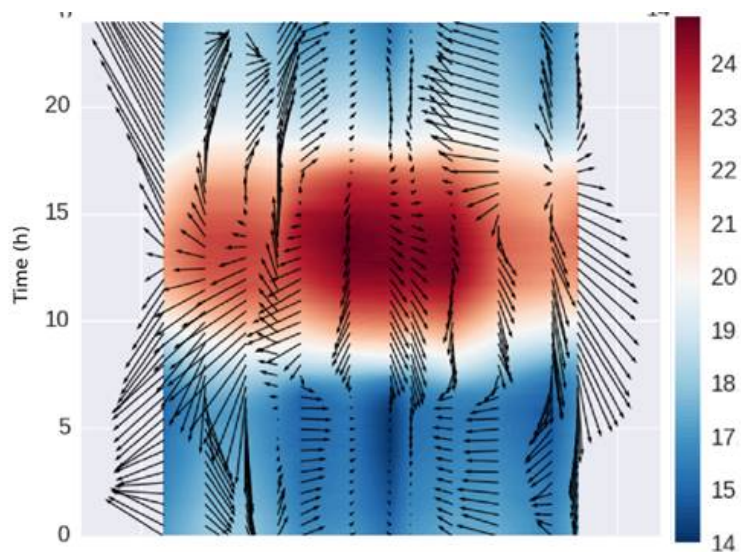
Previsibilidade hidrológica



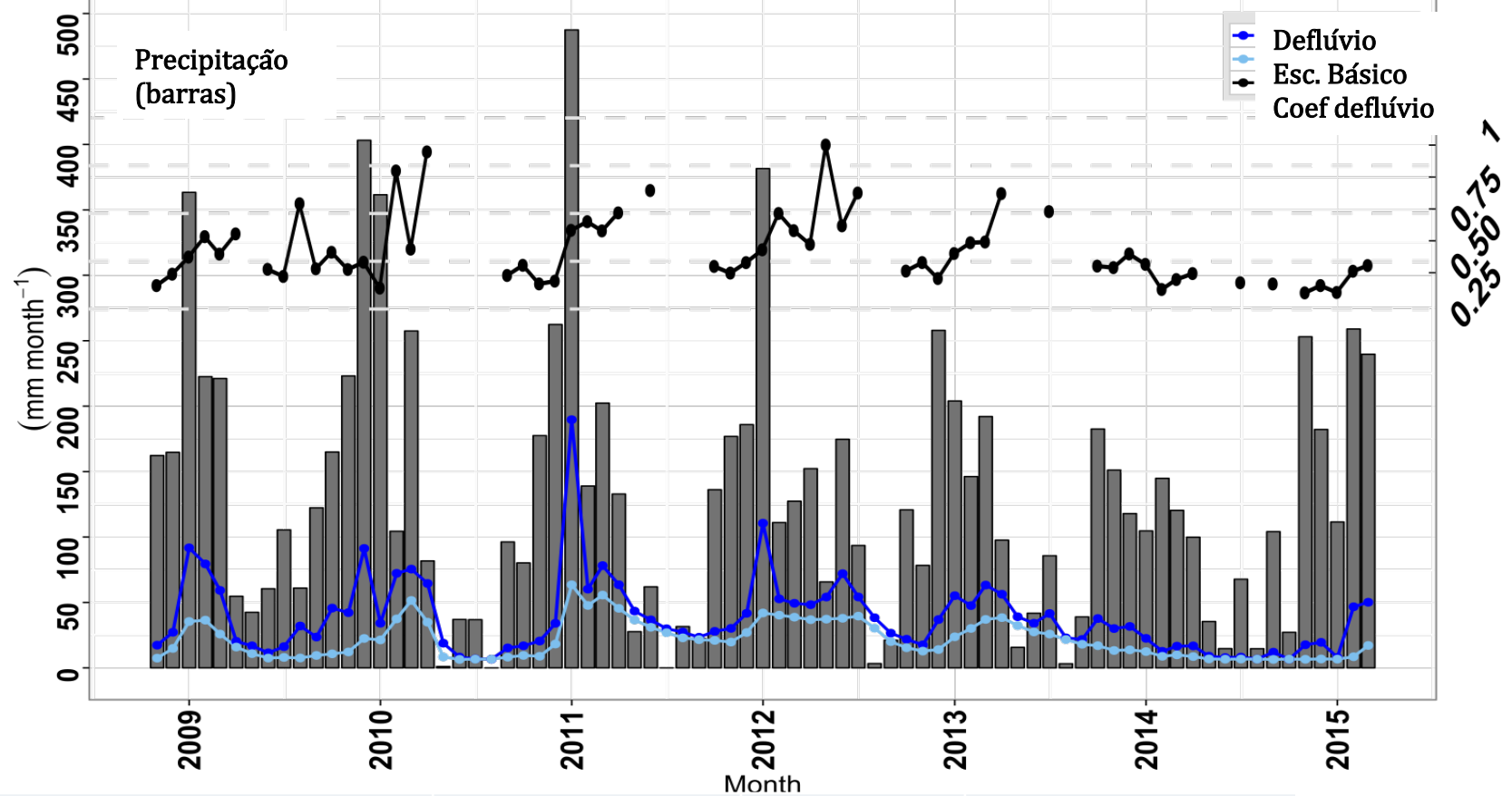
Chuva anual (mm ano⁻¹)



Temperatura do ar (°C) microbacia Ribeirão das Posses, Extrema, MG



Balço de água anual (mm ano⁻¹) bacia Ribeirão das Posses



MEDIAS mm/a	2009 a 2014	2014	desvio 2014
Precipitação	1434	1173	-18%
Evapotranspiração	954	926	-3%
Deflúvio	481	247	-49%
Escoamento básico	266		-45%
Recarga aquífero	171	101	-41%

Agradeço

humberto.rocha@iag.usp.br



Universidade de São Paulo
B R A S I L

Laboratório de Clima e
Biosfera – IAG / USP